

ARTISAN Collection

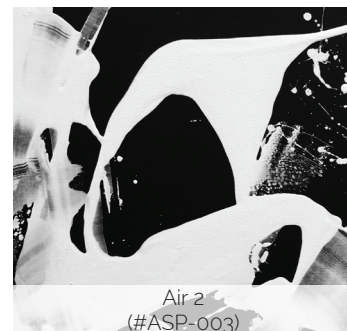


Sarah Phelps

Sarah Phelps by Barbican is the latest addition to the Artisan Collection available as printed shade material on the complete offering of Barbican lighting fixtures.

A subtle mix of creativity and nature. Strength and courage. Talent and determination. All of these attributes come through in her art.

Her two techniques, colour blending and colour dragging, create interesting textures and her bold colour palette create unique and striking pieces.



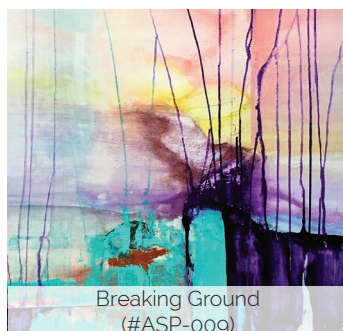
Air 2
(#ASP-003)



Aspire
(#ASP-004)



Benevolence
(#ASP-006)



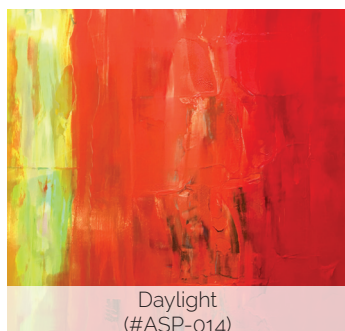
Breaking Ground
(#ASP-009)



Cloud Nine
(#ASP-011)



Conquer
(#ASP-012)



Daylight
(#ASP-014)



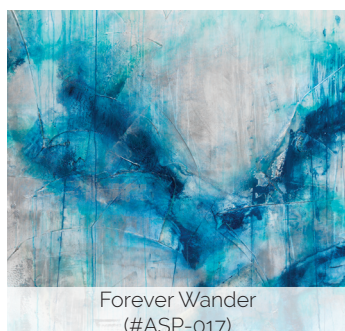
Descent
(#ASP-015)



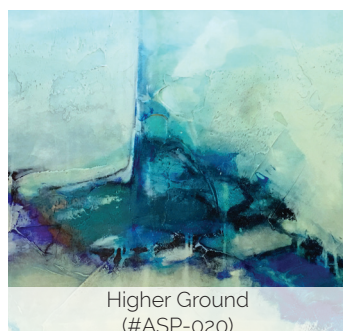
Echo
(#ASP-023)



Flicker
(#ASP-060)



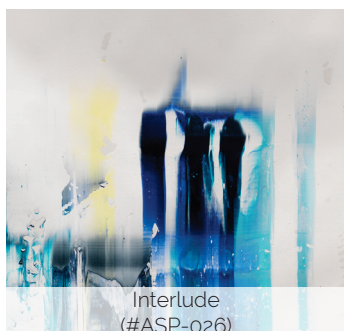
Forever Wander
(#ASP-017)



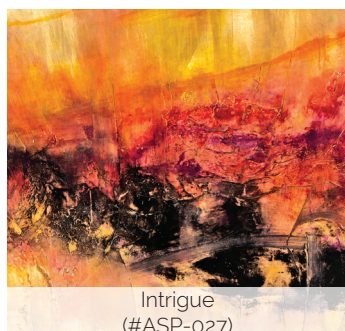
Higher Ground
(#ASP-020)



In Dreams
(#ASP-024)



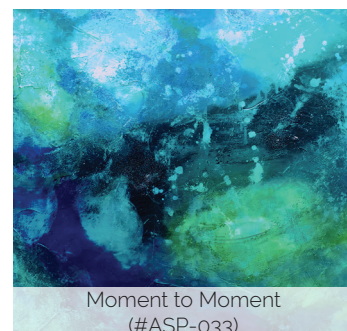
Interlude
(#ASP-026)



Intrigue
(#ASP-027)



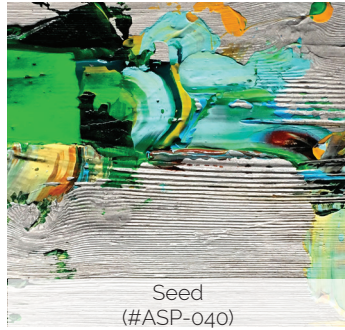
Meridian
(#ASP-029)



Moment to Moment
(#ASP-033)



Pride
(#ASP-036)



Seed
(#ASP-040)



Shadow of the Sun
(#ASP-041)



Silent Explosion
(#ASP-042)



Something Greater 1
(#ASP-043)



Something Greater 2
(#ASP-044)



Summit
(#ASP-062)



Sway
(#ASP-046)



The Greatest
(#ASP-049)



The Voyage
(#ASP-050)



Those Miracles
(#ASP-051)



Time Space
(#ASP-052)



Traces
(#ASP-054)



Unbound
(#ASP-055)



Within
(#ASP-058)



A. Pippin

Abstract and playful with punches of colour, this collection of mixed media pieces will entice the senses.

With more than 75 artistic creations to choose from, you can be guaranteed that your fixtures will be original and a true piece of art.

Combining top quality materials and craftsmanship with an inspiring collection of visual imagery, Aleta Pippin by Barbican can help you create a one-of-a-kind functional art piece.



A Fish's Tale
(#AAP-001)



A Trip Through Time
(#AAP-002)



Blush Spring
(#AAP-006)



Butterfly Wings
(#AAP-008)



Canyon Lands
(#AAP-009)



Cheek to Cheek
(#AAP-011)



Creativity
(#AAP-014)



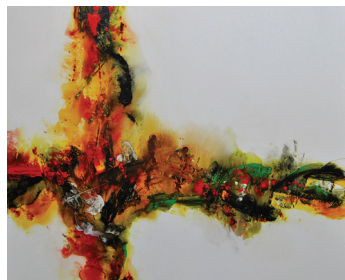
Daybreak
(#AAP-016)



Energy Abounds
(#AAP-020)



Experience in Action
(#AAP-021)



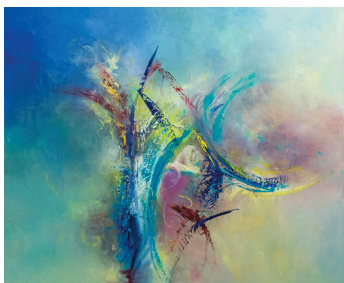
Feeling of Richness
(#AAP-024)



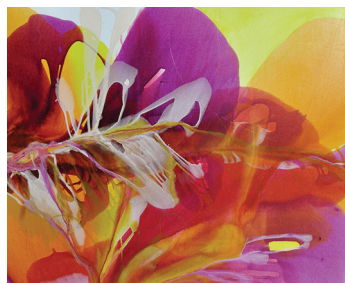
First Blush of Spring
(#AAP-025)



Flood of Purple & Yellow
(#AAP-026)



Focused Intention
(#AAP-028)



Glorious Rhythms of Fall
(#AAP-030)



I'll Wait for You
(#AAP-033)



Into the Unknown
(#AAP-037)



Joy Spreads Pass It On
(#AAP-040)



Let It Flow
(#AAP-042)



Lift Off 3
(#AAP-044)



Look for the Silver Lining
(#AAP-047)



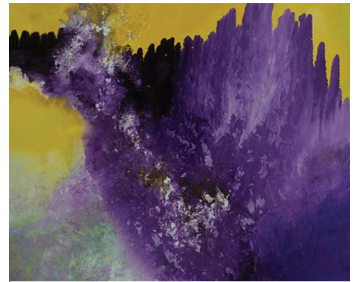
Many Shades of Grey #1
(#AAP-049)



Never a Dull Moment
(#AAP-051)



On the Threshold of a Dream
(#AAP-052)



Purple Rain
(#AAP-055)



Radiance
(#AAP-057)



Spontaneous Combustion
(#AAP-063)



Spring Fling
(#AAP-064)



Summer Medley #2
(#AAP-067)



Sweet Melody
(#AAP-068)



Taking the Plunge
(#AAP-069)



The Secret Garden
(#AAP-073)



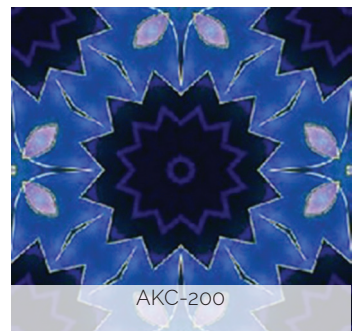
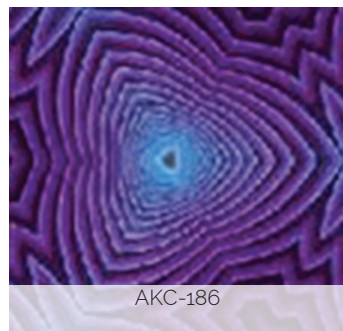
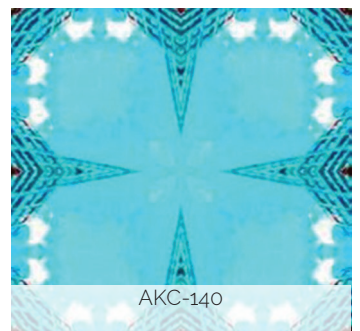
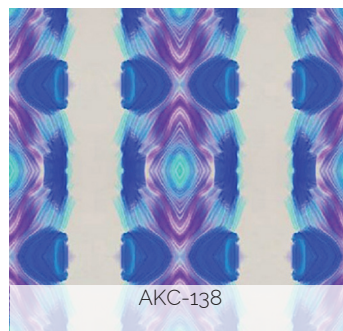
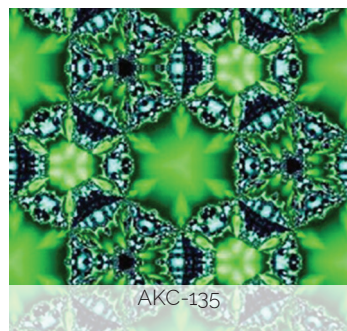
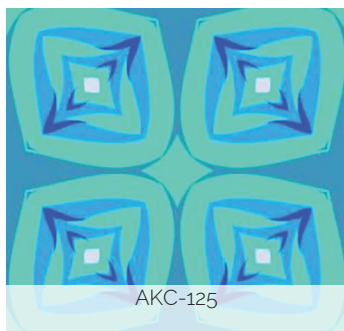
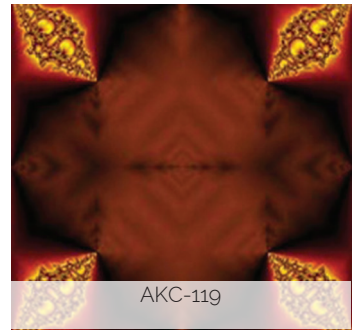
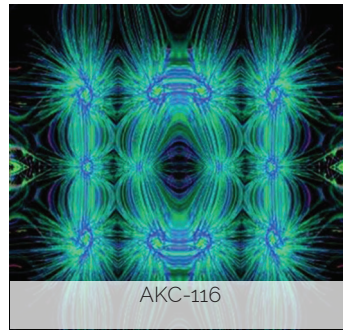
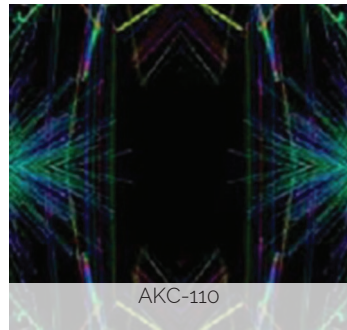
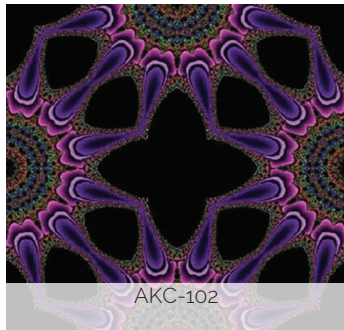
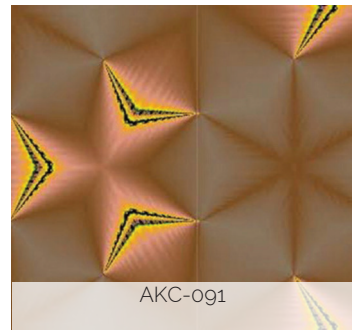
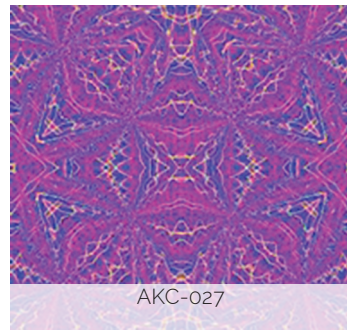
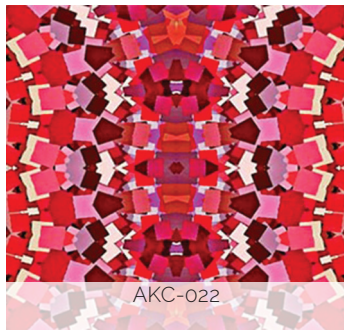
The Tide Rushes In
(#AAP-074)

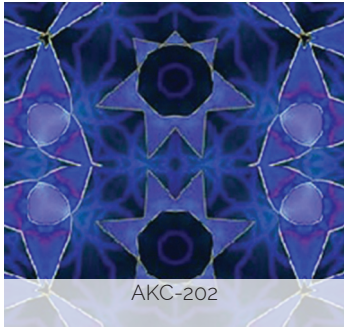


kaleidoscope *by* Suzana Iljovska

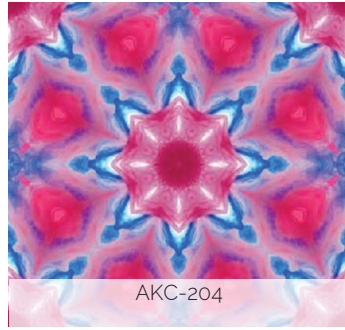
This collection features the works of Suzana Iljovska, a Canadian tech designer, who has created more than 800 original designs, with more scheduled to be released.

Abstract patterns will mesmerize as light passes through, creating brilliant, prismatic imagery. The Kaleidoscope Collection integrates these designs into lighting design concepts in a multidimensional way that allows further engagement. The lighting transforms the colours and patterns into lyrical reflections and dynamic new tones.





AKC-202



AKC-204



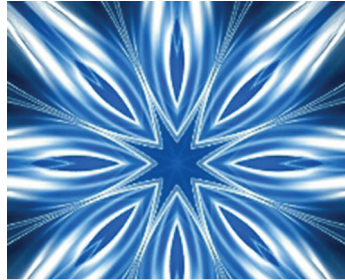
AKC-207



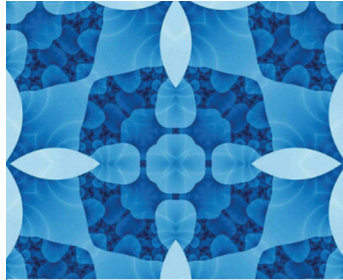
AKC-373



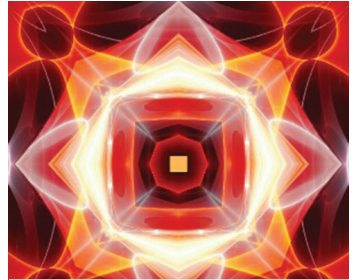
AKC-391



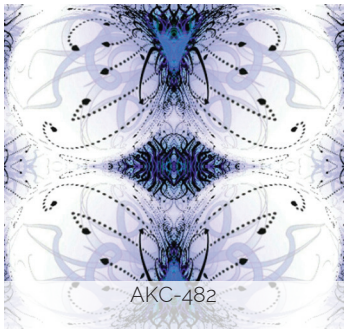
AKC-427



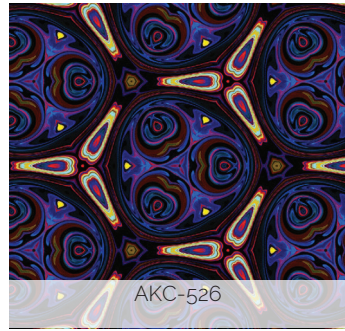
AKC-429



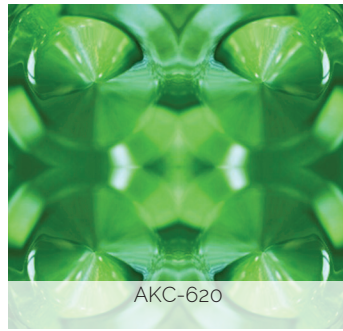
AKC-451



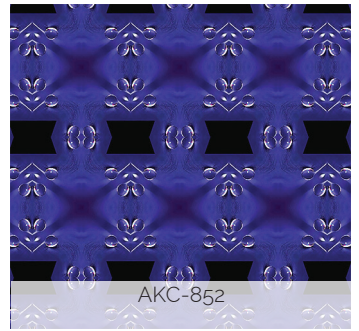
AKC-482



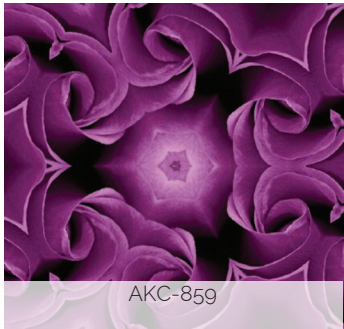
AKC-526



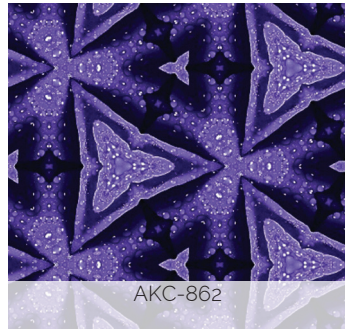
AKC-620



AKC-852



AKC-859



AKC-862



AKC-888



AKC-924



meet the ARTISTS

Sarah Phelps

Sarah Phelps is someone who always says yes to life and in return she has had some amazing opportunities to showcase her art. She exhibited paintings at the Carrousel du Louvre in Paris France, and shows in Italy. Sarah's pieces have also been featured in the Globe & Mail, a New York art competition, Toronto's CityLine morning show, Houzz, and numerous publications. Sarah is someone who doesn't shy away from challenges. She takes risks. Pushes herself outside of her comfort zone. Excels at everything she puts her energy into. She is a subtle mix of creativity and nature. She is someone that takes her life experiences and channels them into her art to create beautiful abstract paintings with depth and soul.

“ When the paint hits the canvas, my emotion runs free. I infuse my paintings with beauty, inspiration and positive energy, which brings joy and wonderment to the viewer. My ultimate goal is to create a unique connection and ignite chemistry between the painting and the person. There isn't a better feeling.”



Aleta Pippin

Motivated by creating, Aleta Pippin's paintings are energetic interpretations reflecting her on-going exploration of oils. That exploration has resulted in vibrant abstract paintings. Based out of Santa Fe, New Mexico, Pippin took her first painting lesson in 1992. There was restlessness about her, though; and in 1997, she quit painting for four years to pursue other creative passions. In 2000, painting again exploded into Pippin's life, blooming into a full-time passion. In 2011, she launched Pippin Contemporary, a gallery focused on abstract work providing a sensory experience of colour and mood for collectors and viewers.

“ Being an artist is a life journey as well as an interior journey. I'm continually assessing my work considering how I'd like it to evolve. As a result, I'm constantly exploring various media, resulting in learning new skills. I consider my artwork a tribute to the beauty and the vibrational impact that color imparts and infuse that appreciation into every piece.”



Kaleidoscope Suzana Iljovska

Today's world of modern design has evolved into a revolutionary medium that links technology and art.

Suzana Iljovska, a Canadian artist based out of Niagara Falls, Ontario, merges her creativity with powerful tech tools, providing the unlimited freedom to express her imagination and dreams. The Kaleidoscope Collection integrates these dreams into lighting design concepts in a multidimensional way that allows further engagement. The lighting transforms the colours and patterns into lyrical reflections and dynamic new tones.

“ I believe that any modern artist needs to remember about pushing the art forward; inventing, defining new paradigms of expression with powerful meanings.”



barbican ARCHITECTURAL

lighting | walls | acoustic

Barbican Architectural Products Ltd. - HQ 479 Central Ave., Fort Erie, ON, CA, L2A 3T9

www.barbican.ca
1.800.663.5781

Barbican Architectural Products (USA) Inc. 266 Elmwood Ave., Unit #386, Buffalo, NY, USA, 14222

sales@barbican.ca

© 2022 Barbican. All Rights Reserved. Specifications subject to change or withdrawal without notice.

Last modified: 12/08/2022