

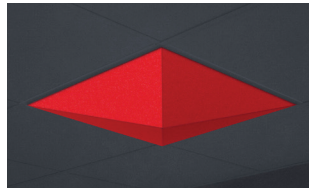
The Jut OWTI Acoustic leverages Barbican's new FOM technology to allow for an array of folded shapes. If you don't see the shape you need feel free to create your own! If you can fold your shape from cardboard then chances are we can fold it from our acoustic material. Our design team is ready to assist you in your project.

Groupings of fixtures can create mesmerizing design features in any space.

SHAPE OPTIONS



Box

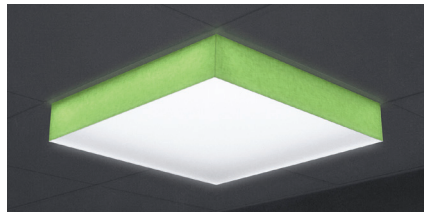


Pyramid

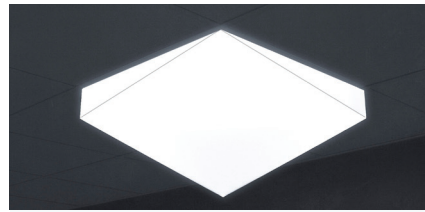


Slice

RELATED PRODUCT



Jut Box



Jut FOM OWTI



Jut FOM INNI

AVAILABLE FINISH OPTIONS

Acoustic



Printed AR

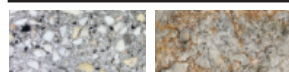
Pattern



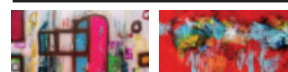
Natural Wood



Natural Stone



Artisan Collection



See Website

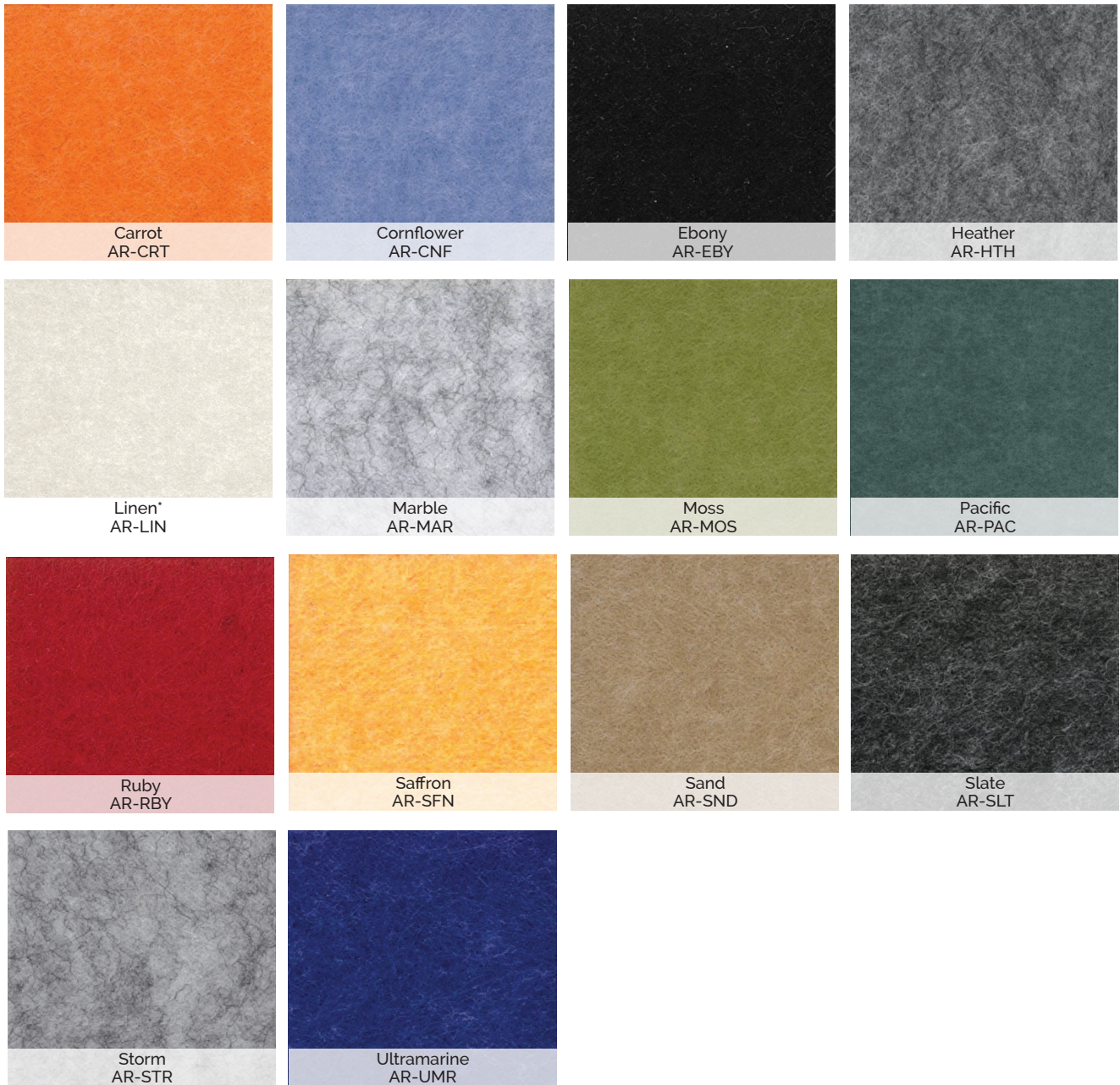
[+ MORE](#)

SPECIFICATION

Fixture	Shape	T-Bar Size	Width	Length	Height
<input type="text" value="ARF-203"/>	<input type="text"/>	<input type="text"/>	<input type="text" value="24W"/>	<input type="text" value="24L"/>	<input type="text"/>
ARF-203 Jut AR OWTI	BOX Box PYR Pyramid SLI Slice CUSS Custom Shape <i>Consult factory</i>	15TS 15/16" 9TS 9/16" <i>Please choose the size t-bar used for this project to ensure proper fixture dimensions/fitment</i>	24W 24" CUSW Custom Width <i>Consult factory</i>	24L 24" CUSL Custom Length <i>Consult factory</i>	2H 2" 4H 4" 6H 6" CUSH Custom Height <i>Consult factory</i>

Acoustic Material	Print Category*	Shade Finish Selection*	Mounting
<input type="text"/>	<input type="text"/>	<input type="text"/>	<input type="text"/>
AR-CRT Carrot AR-CNF Cornflower AR-EBY Ebony AR-HTH Heather AR-LIN Linen AR-MAR Marble AR-MOS Moss AR-PAC Pacific AR-RBY Ruby AR-SFN Saffron AR-SND Sand AR-SLT Slate AR-STR Storm AR-UMR Ultramarine CUSPR Printed AR <i>Printed on Linen AR Choose from the categories in the next column</i>	PS Printed Pattern PW Natural Wood PSF Natural Stone PSASP Sarah Phelps** PSAKC Kaleidoscope** PSAAP Aleta Pippin** CP Custom Printing <i>Consult factory</i> <i>* See website for examples/ names of some available finishes</i> <i>** Part of Barbican's Artisan Collection</i>	<input type="text" value="Finish Name"/> <i>* See website for examples/names of all available finishes</i>	RAM Recessed ATC SFM Surface Mount <i>Consult factory</i>

ACOUSTIC FELT Colour Samples



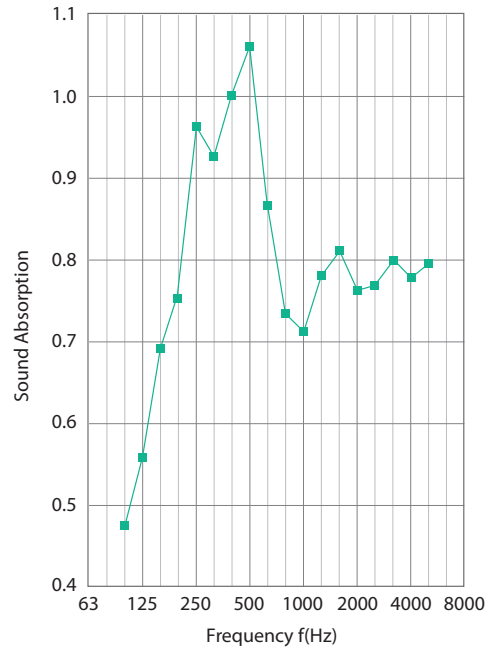
Printed AR also available



NOISE REDUCTION COEFFICIENT

- The test was carried out by external laboratory (SGS) assessed as competent.
- TEST METHOD: EN ISO 354:2003 Acoustic Measurement of sound absorption in a reverberation room. Tested with back airspace of 200mm (7.87").
- TEST RESULT: Noise Reduction Coefficient: NRC = 0.85

f Hz	α_s
50	/
63	/
80	/
100	0.47
125	0.56
160	0.69
200	0.75
250	0.96
315	0.92
400	1.00
500	1.06
630	0.87
800	0.73
1000	0.71
1250	0.78
1600	0.81
2000	0.76
2500	0.77
3150	0.80
4000	0.78
5000	0.79
NRC	0.85



- Flame spread & Smoke ASTM E84, UL 723, FSI 15, SDI 80

WRITTEN SPECIFICATIONS

Construction

- Made from recycled PET (polyethylene terephthalate) fabric, which is rigid, dimensionally strong, and stable material that is water and microbial resistant. Contains at least 60% recycled content.

LABELS



APPLICATIONS

